



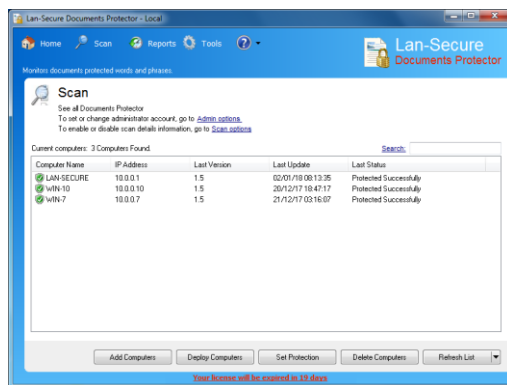
Lan-Secure Documents Protector

If your documents security is important
You need Documents Protector to keep it that way

Documents Protector is document security management software that implements discovery, alerting and blocking of restricted words and phrases in documents. The software is tracking write operations on local files and search for the restricted words and phrases in the selected local folders. It helps to secure IT environments from writing confidential and sensitive data to documents and prevent information theft.

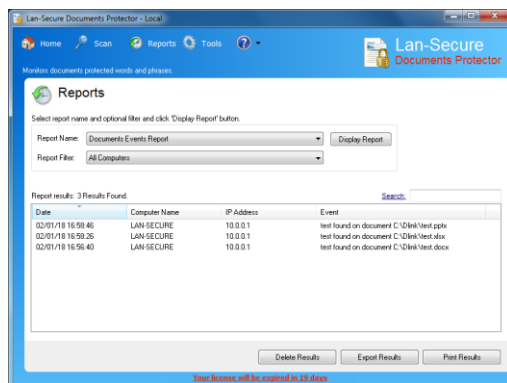
Real-time protection

Documents Protector is acting as a server to all protected computers. The software can be installed through the software management console or through any 3rd party deployment system by using the software deployment MSI package. Its powerful engine can protect any number of computers and monitor the protected computers for active document security protection.



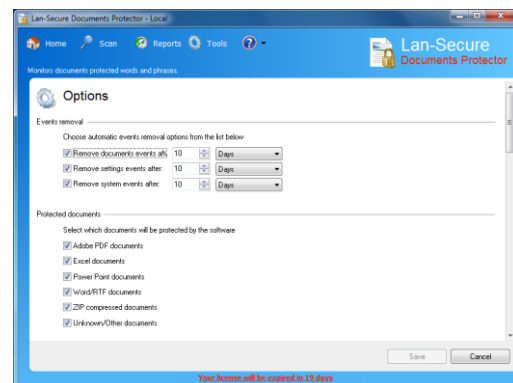
Real-time reports

Documents Protector is collecting real-time reports of documents events and configuration changes of the current protected computers. The reports provide logging information about the restricted words and phrases that were found on local documents and also provide optional actions like command executions, mail messages and exporting capabilities.



Real-time options

Documents Protector provides optional software settings that include unstoppable client protection service mode, selectable protected folders and restricted words and phrases, including discovery, alerting and blocking of protected documents and multiple redundant servers.



Documents Protector Key Features

- Document security management using restricted words and phrases.
- Implement document security on selected folders and phrases.
- Support multiple document formats including PDF, Word, Excel, Power Point, compressed and textual.
- Real-time reports of protected documents and configuration changes activities.
- Optional Automatic active protection discovery and scanning.
- Optional multiple redundant servers including first available or responsive.
- Optional protection clients service unstoppable mode.
- Support remote control administration permissions.

Documents Protector System requirements

- A 800 MHz or faster processor with at least 256 MB of RAM
- Microsoft Windows XP, Windows 7/Vista™ or 2003/2008 Server
- At least 10 MB of available free space on your hard disk