



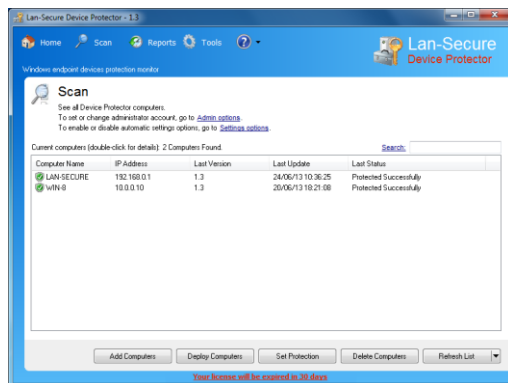
# Lan-Secure Device Protector

If you need to secure your endpoint computers  
You need Device Protector to help you keep it that way

Device Protector is Data Loss Prevention (DLP) and device control endpoint security software that enforces endpoint devices protection policies on organization computers. The software helps to secure IT environments from un-trusted endpoint devices that can be used by potential intruders to access sensitive organization data and prevent data leakage and information theft.

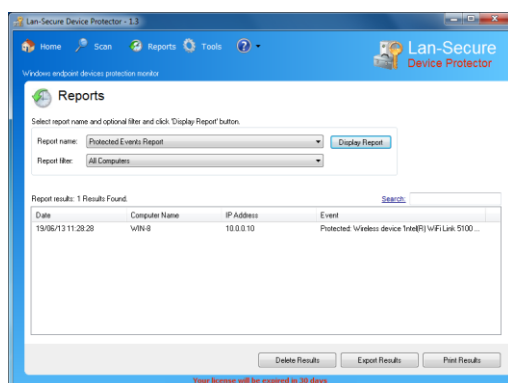
### Real-time protection

Device Protector is acting as a server to all protected computers and can be deployed through the software management console or through any 3rd party deployment system by using the software MSI package deployment option. The software powerful engine can control and secure any number of computers by installing a remote service on the protected computers. It is supporting devices online and offline protection including read-only, read-write, working hours, exclude users and exclude media serial numbers capabilities.



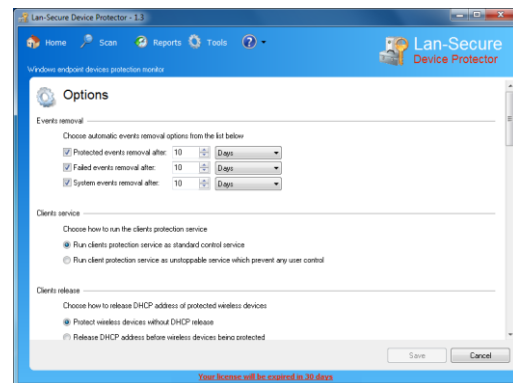
### Real-time reports

Device Protector is collecting activity logging events of the protected computers and generates real-time reports. The reports provide logging information about the protected devices activity including optional actions like command executions, e-mail messages, Syslog notification and exporting capabilities.



### Real-time options

Device Protector provides optional software settings that include automatic software startup options, automatic events removal, unstopable client service, client notification message, auto discovery and multiple redundant servers.



### Device Protector Key Features

- Real-time Data Loss Prevention (DLP) device control endpoint security.
- Support Bluetooth, DVD/CD-ROM, Firewire, Floppy, Imaging, Infrared, Microphones, Modems, Portable Mobile Phones, Ports, Printers, Removable Disks, SD Cards, Sound, Tape Drives and Wireless devices.
- Support online and offline endpoint security including read-write, read-only and working hours protection options.
- Support device control exclude options of users and DVD/CD, Flash drives media serial numbers.
- Optional settings like unstopable protection service, events removal and client's notification.
- Optional automatic computers discovery and scanning.
- Optional actions and exporting capabilities on protected devices.

### Device Protector System requirements

- A 800 MHz or faster processor with at least 256 MB of RAM
- Microsoft Windows XP, Windows 7/Vista™ or 2003/2008 Server
- At least 10 MB of available free space on your hard disk